

Zapcode

The faster way to capture addresses

Zapcode is now even faster and more powerful than ever! The new Zapcode has been specifically developed to provide greater functionality than earlier versions with a far more 'user-friendly' look and feel.

Enter a postcode and Zapcode returns all elements of the address that are common to that postcode. With large user postcodes Zapcode will return a complete address including the organisation name. Zapcode reduces data entry time by dramatically reducing the number of keystrokes needed to enter address information. This is invaluable in any environment where fast, accurate capture of an address is required.

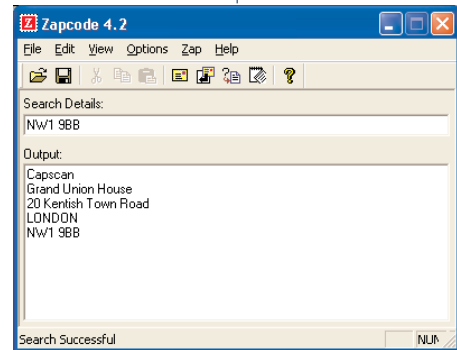
FEATURES AND BENEFITS

Zapcode:

- Instantly retrieves any address - up to Thoroughfare level.
- Offers a new partial postcode search option.
- Provides a 'new for old' automatic postcode updating facility which is designed to make the software simpler to use and to eliminate end-user frustration.
- Provides a customisable graphical user interface (GUI) that allows the user to blend in and out features such as the toolbar, a status bar and the Relevant Codes Database (RCDB) information which includes map co-ordinates, ward codes, health codes, etc.
- Also offers a simplified setup screen for the layout of the output address. With just a few mouse clicks it's possible to format the address to allow instant data entry into virtually any Windows application.
- Is available as a data capture tool for use on the Web.

TECHNICAL FEATURES

- Runs on Windows NT, 2000, 2003, XP, and Vista as well as Unix.
- Compact database of only 11MB.
- Quarterly database updates.



Code List (4 items)	
Name	Data
Administrative County Name	CAMDEN
London Locality (outcode or sector)	CAMDEN TOWN
Traditional County Number	0000
Administrative County Number	0542

For further information on our full range of products and services, please call Capscan on:

020 7428 1255

Alternatively please visit our website at:

www.capscan.com

or email:

enquiries@capscan.com

